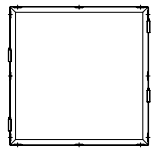
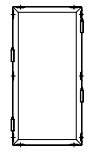


ABSOLUTE FILTER SIZE		H	W	MATERIAL	ORDERING REFERENCE				
					MAGNA-FRAME PART NO.	FASTENER 5.88 DEEP FILTER	NO. REQD	FASTENER 11.50 DEEP FILTER	NO. REQD
23-3/8	23-3/8	24.00	24.00	GALVANIZED STEEL 14 GA (.075)	119636	001	4	119669	002
23-3/8	11-3/8	24.00	12.00				4		
11-3/8	23-3/8	12.00	24.00				2		
24	24	24.62	24.62				4		
24	12	24.62	12.62				4		
12	24	12.62	24.62				2		
23-3/8	23-3/8	24.00	24.00				4		
23-3/8	11-3/8	24.00	12.00	4					
11-3/8	23-3/8	12.00	24.00	TYPE 304 STAINLESS STEEL 14 GA (.075)	119636	003	119669	004	
24	24	24.62	24.62						2
24	12	24.62	12.62						4
12	24	12.62	24.62						4
23-3/8	23-3/8	24.00	24.00	MILD STEEL 14 GA (.075)	119636	001	119669	002	
23-3/8	11-3/8	24.00	12.00						4
11-3/8	23-3/8	12.00	24.00						2
24	24	24.62	24.62						4
24	12	24.62	12.62						4
12	24	12.62	24.62						2
23-3/8	23-3/8	24.00	24.00						4
23-3/8	11-3/8	24.00	12.00						4
11-3/8	23-3/8	12.00	24.00	119636	009	119669	002		
24	24	24.62	24.62					2	
24	12	24.62	12.62					4	
12	24	12.62	24.62					4	
24	24	24.62	24.62	119636	016	119669	002		
24	12	24.62	12.62					4	
12	24	12.62	24.62	119636	017	119669	002		
12	24	12.62	24.62					4	
12	24	12.62	24.62	119636	018	119669	002	4	

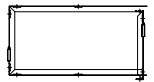
CONFIGURATION



24 H x 24 W &
24.62 H x 24.62 W
SHOWN, 4 FASTENERS REQD



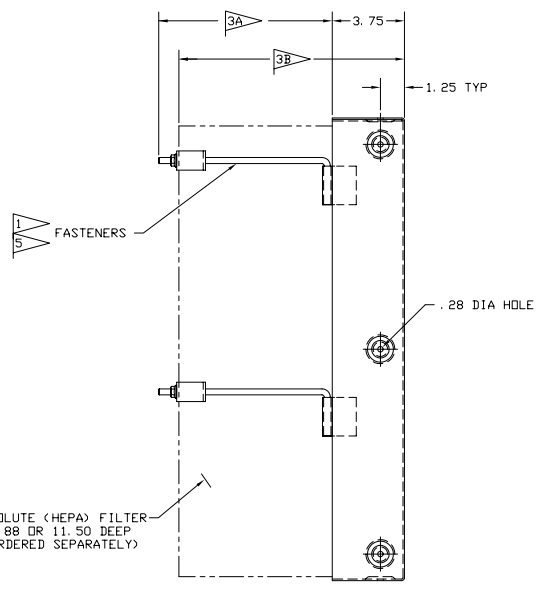
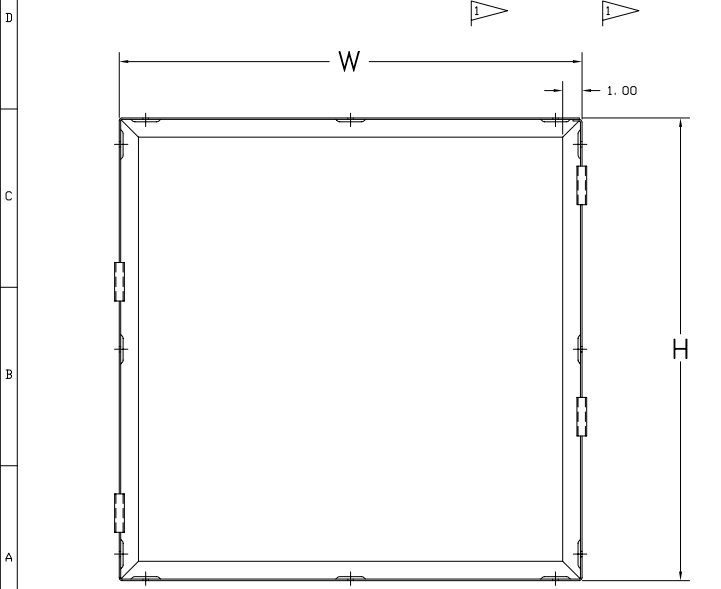
24 H x 12 W &
24.62 H x 12.62 W
4 FASTENERS REQD



12 H x 24 W &
12.62 H x 24.62 W
2 FASTENERS REQD

NOTES:

- FASTENERS (ORDERED SEPARATELY):
A. SEE TABULATION FOR ORDERING REFERENCE AND NUMBER REQUIRED PER FRAME. IF PRE-FILTER KIT IS REQUIRED OMIT FASTENERS.
- FOR MULTI-BANK ARRANGEMENTS, SEE INSTALLATION INSTRUCTIONS 120652
- LENGTHS:
A. FASTENER:
3.3 FOR 5.88 DEEP FILTER AND 8.9 FOR 11.50 DEEP FILTER
B. FRAME WITH FILTER:
6.2 FOR 5.88 DEEP FILTER AND 11.8 FOR 11.50 DEEP FILTER
- FOR MAGNA FRAME III (GEL SEAL) UNITS SEE DRAWING 125149.
- TIGHTEN FASTENERS UNIFORMLY TO 30 INCH-POUNDS OF TORQUE.



ABSOLUTE (HEPA) FILTER—
5.88 OR 11.50 DEEP
(ORDERED SEPARATELY)

D	1/21/03	REVISED PER SALES	14955-Y	AC	CM	CC
A	10/26/93	FIRST ISSUE	10413-N	JWC	JWC	CC
REV.	DATE	DESCRIPTION	END	DFT	CK	APP



©Camfil Farr <http://www.camfilfarr.com>

DESCRIPTION
MAGNA-FRAME II
GASKET-SEAL ABSOLUTE FILTER

SHEET	DRAWING NUMBER	REV.
1 OF 1	119658	D